

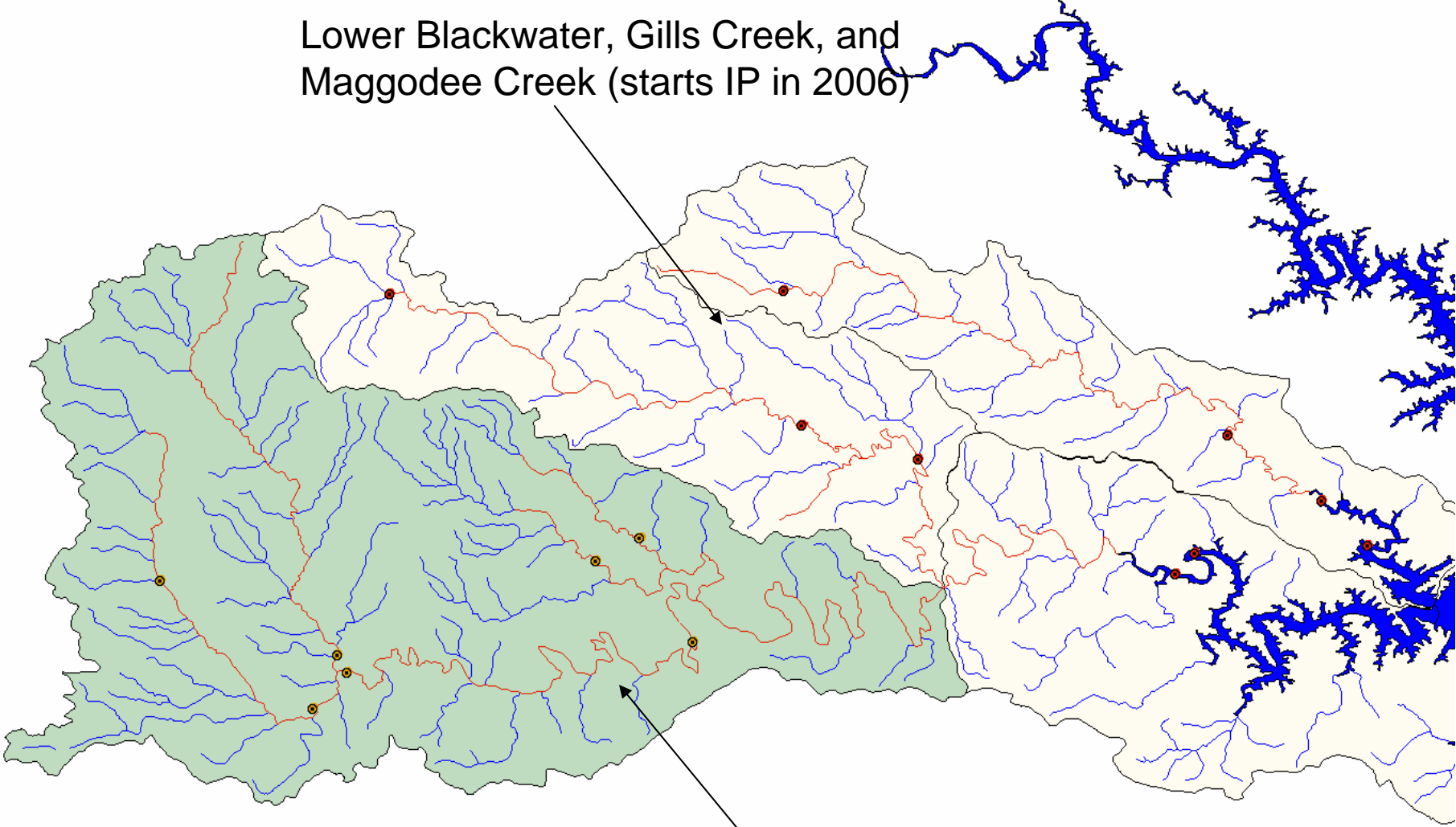
2005 Blackwater River Implementation Update



- VDEQ maintains 7 water quality monitoring stations in the Upper Blackwater River to evaluate implementation efforts
- VDEQ plans on monitoring 9 stations to evaluate implementation efforts for the Lower Blackwater River, Gills Creek, and Maggodee Creek
- Two stations (4ABWR032.32 & 4ABWR019.72) are Zipper Trend Stations
- 4ABWR032.32 was discontinued in Jan 2003 due to safety concerns

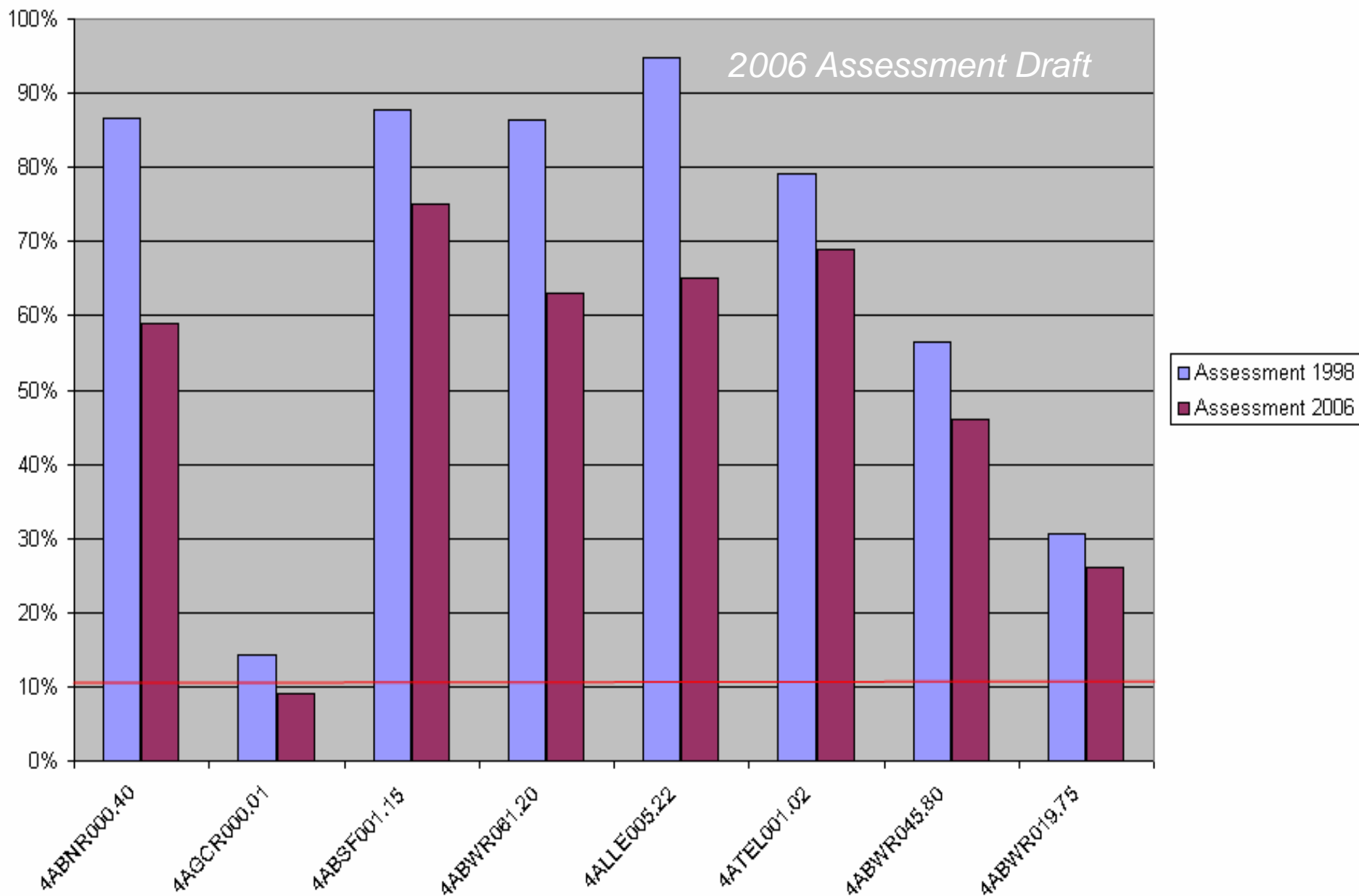


Lower Blackwater, Gills Creek, and
Maggodee Creek (starts IP in 2006)

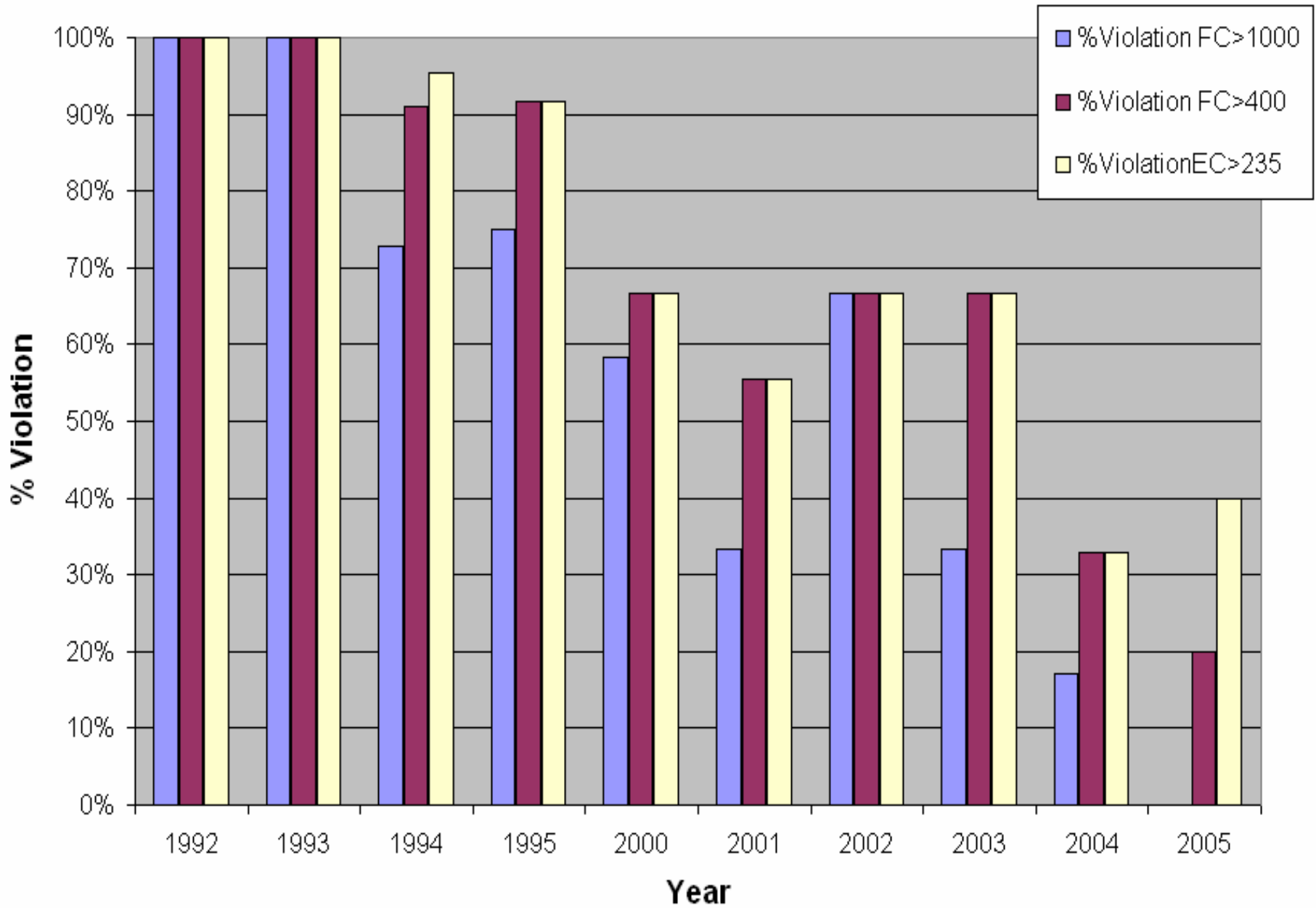


Upper Blackwater (under IP)

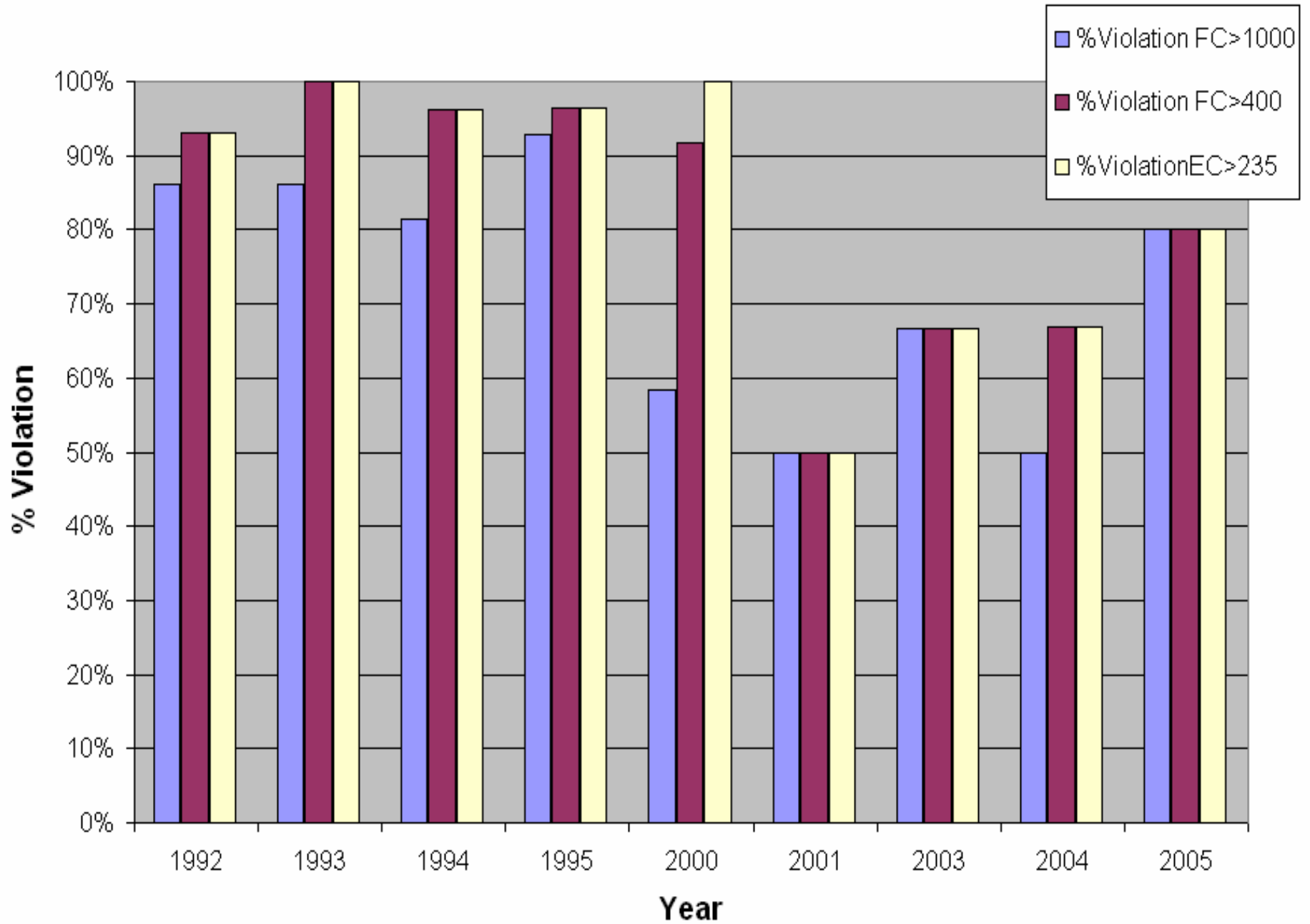
% Bacteria Violations By Assessment Period



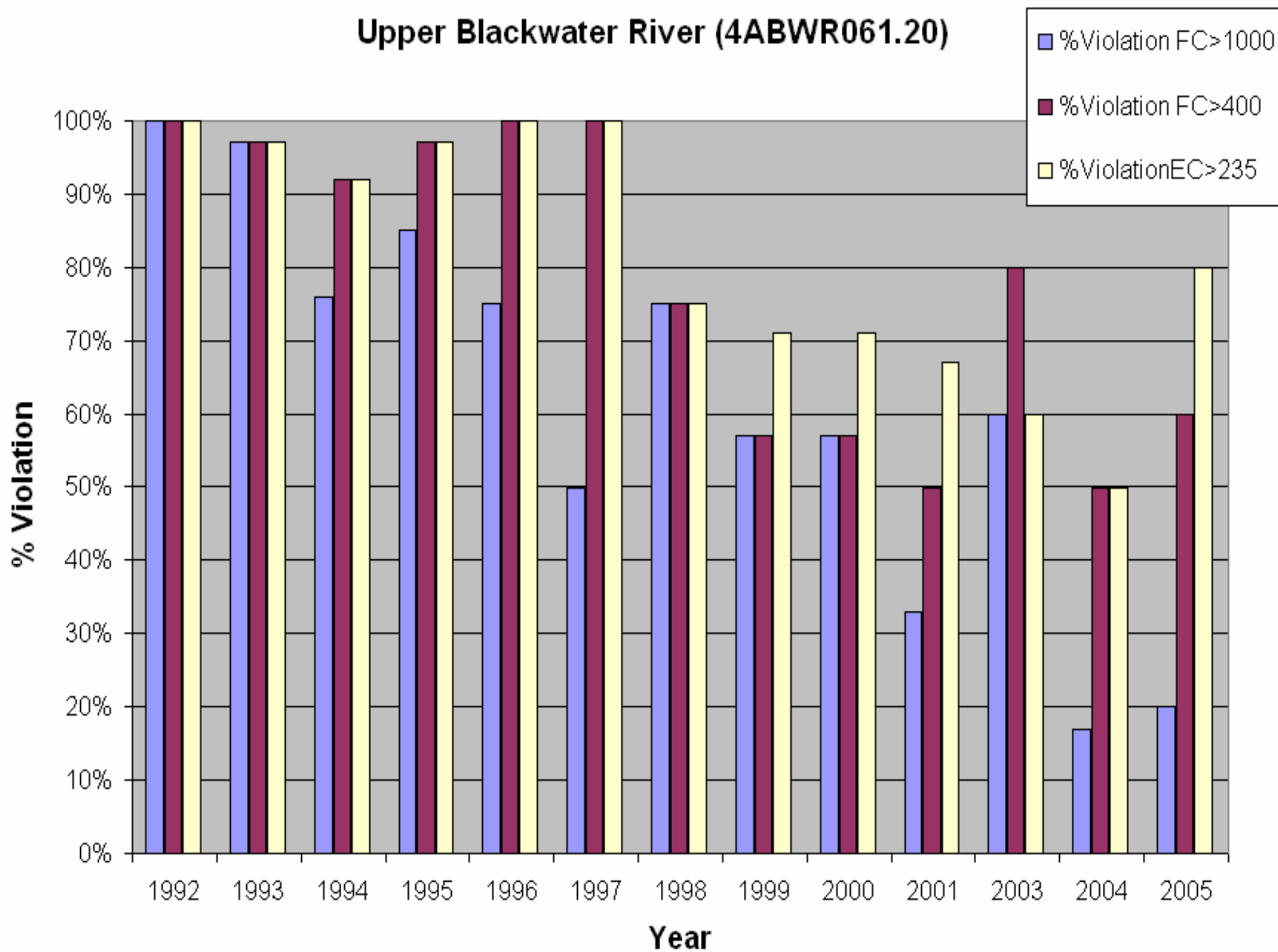
N.F. Blackwater (4ABNR000.40)



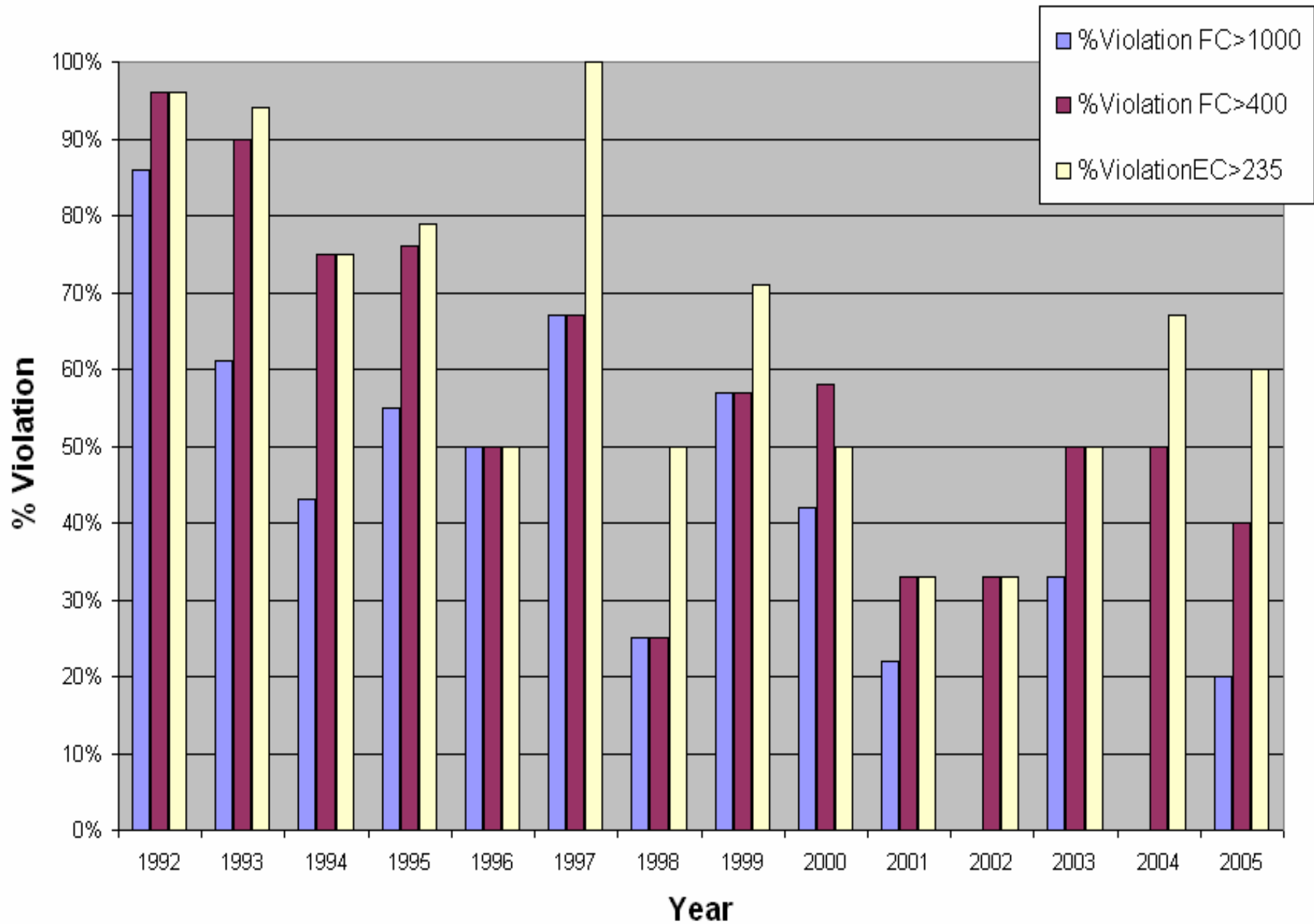
SF, Blackwater (4ABSF001.15)



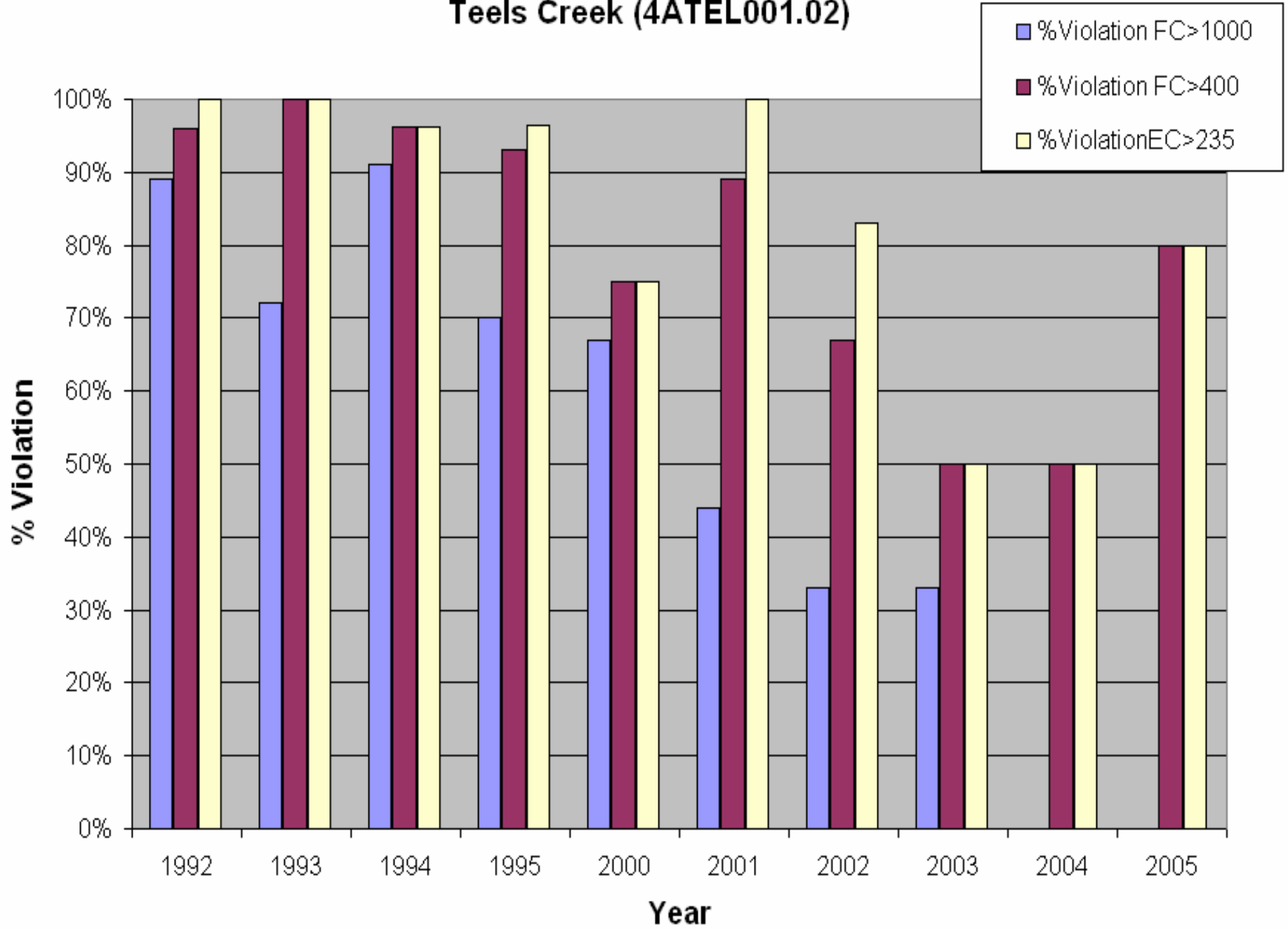
Upper Blackwater River (4ABWR061.20)



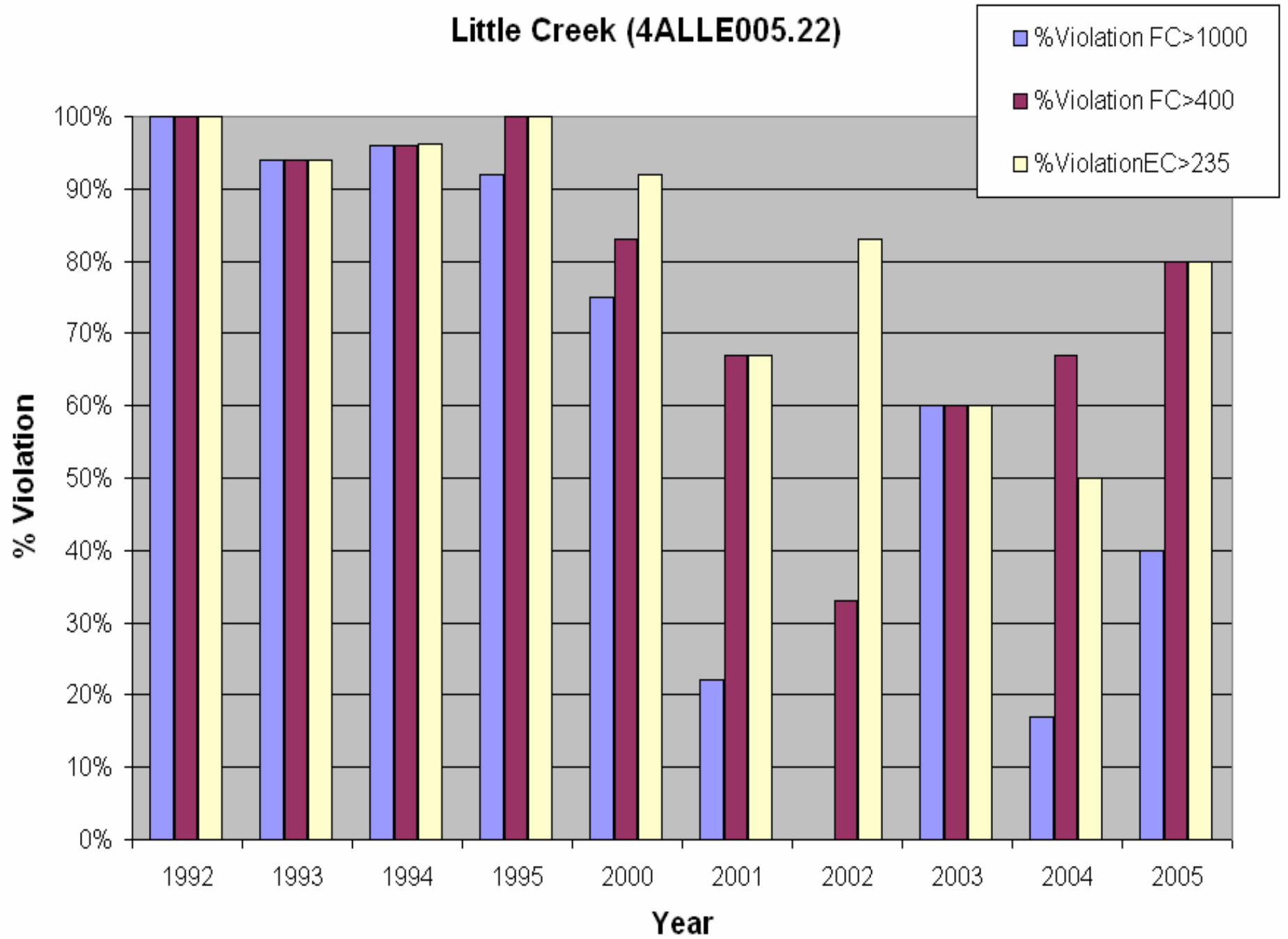
Middle Blackwater River (4ABWR045.80)



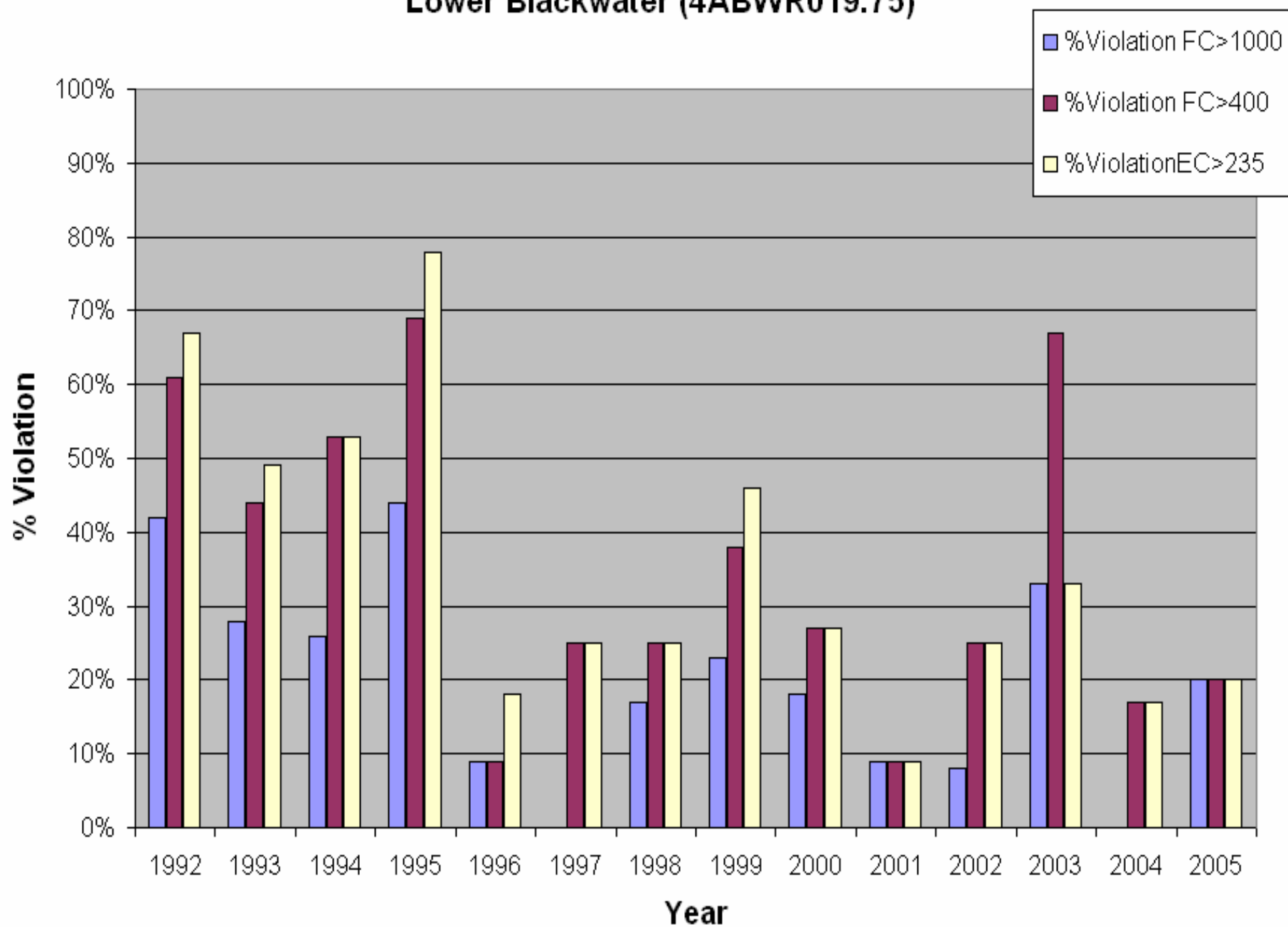
Teels Creek (4ATEL001.02)



Little Creek (4ALLE005.22)



Lower Blackwater (4ABWR019.75)



Conclusions

- Blackwater River watershed has received much attention, Ferrum College, BRSWCD, and VDCR used WQIA monies in 1990s and bacteria TMDLs were completed in 2000
- Still early into the implementation process, as Blackwater River stakeholders just beginning to use TMDL implementation funds
- NPS programs/outreach appear to be improving water quality, but still not meeting state bacteria standards



Questions?



JAN 8 2002