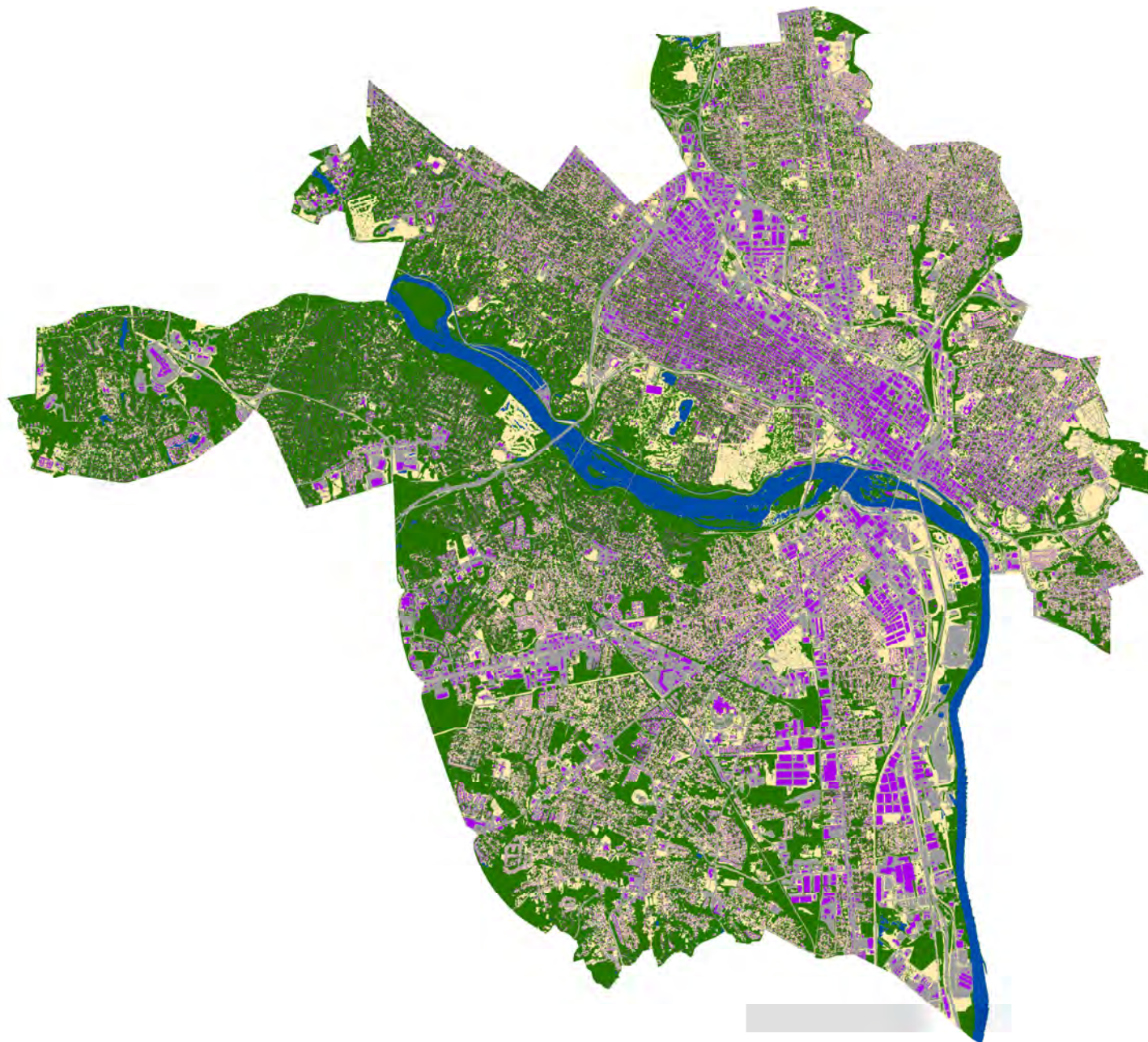


Appendix E

Urban Tree Canopy Analysis - Richmond, VA



0 0.5 1 2 Miles

- Water
- Tree Canopy
- Non- Building Impervious
- Building Impervious
- Non- Tree Vegetation



Existing Urban Tree Canopy

	City of Richmond			Council District 1			Council District 2			Council District 3			Council District 4			Council District 5			Council District 6			Council District 7			Council District 8			Council District 9		
UTC Classes	Acres	% Total Land Area	% Land Area	Acres	% Total Land Area	% Land Area	Acres	% Total Land Area	% Land Area	Acres	% Total Land Area	% Land Area	Acres	% Total Land Area	% Land Area	Acres	% Total Land Area	% Land Area	Acres	% Total Land Area	% Land Area	Acres	% Total Land Area	% Land Area	Acres	% Total Land Area	% Land Area	Acres	% Total Land Area	% Land Area
Tree Canopy	16,120.8	40.3%	41.9%	2,100.9	48.7%	51.5%	435.5	17.8%	17.8%	1,021.2	32.8%	32.9%	4,902.8	63.3%	65.6%	1,278.5	36.5%	40.8%	1,296.3	23.1%	25.5%	859.2	31.4%	32.0%	2,536.9	35.9%	35.9%	1,701.8	46.5%	46.5%
Non-Tree Vegetation	8,916.5	22.3%	23.2%	767.3	17.8%	18.8%	450.8	18.4%	18.4%	924.4	29.7%	29.8%	987.8	12.7%	13.2%	927.7	26.5%	29.6%	1,392.5	24.8%	27.4%	880.7	32.2%	32.8%	1,739.6	24.6%	24.6%	841.6	23.0%	23.0%
Non-Building Impervious Building	9,331.5	23.3%	24.2%	776.5	18.0%	19.0%	1,031.8	42.2%	42.2%	817.9	26.3%	26.3%	1,090.9	6.3%	14.6%	594.9	17.0%	19.0%	1,746.5	31.1%	34.3%	661.0	24.1%	24.6%	1,795.4	25.4%	25.4%	812.3	22.2%	22.2%
Impervious	4,138.7	10.3%	10.7%	431.8	10.0%	10.6%	527.2	21.6%	21.6%	342.4	11.0%	11.0%	488.9	6.3%	6.5%	331.7	9.5%	10.6%	650.4	11.6%	12.8%	284.2	10.4%	10.6%	985.8	13.9%	14.0%	302.5	8.3%	8.3%
Water	1,501.6	3.8%	0.0%	236.6	5.5%	0.0%	0.0	0.0%	0.0%	7.2	0.2%	0.0%	279.3	3.6%	0.0%	368.9	10.5%	0.0%	537.5	9.6%	0.0%	52.6	1.9%	0.0%	18.4	0.3%	0.0%	1.5	0.0%	0.0%
Total Area	40,009.2	100.0%	100.0%	4,313.0	100.0%	100.0%	2,445.3	100.0%	100.0%	3,113.0	100.0%	100.0%	7,749.6	100.0%	100.0%	3,501.6	100.0%	100.0%	5,623.3	100.0%	100.0%	2,737.7	100.0%	100.0%	7,076.2	100.0%	100.0%	3,659.7	100.0%	100.0%